

Medford Area Public School District

Medford Area Senior High

1015 West Broadway
Medford, WI 54451
715-748-5951

Medford Area Middle School

509 East Clark Street
Medford, WI 54451
715-748-2516

Medford Area Elementary School

1065 West Broadway
Medford, WI 54451
715-748-2316

Stetsonville Elementary School

W5338 CTH A
Stetsonville, WI 54480
715-678-2600

Rural Virtual Academy

624 College Street
Medford, WI 54451
715-748-4620 ext. 560

District Office

124 West State Street
Medford, WI 54451
715-748-4620



2014-15 School Performance Report

Medford Area Public School District 2014-15 School Performance Report

Table of Contents

District Enrollment.....	3
Assessment Results.....	4
Graduates and Graduation Requirements	5
Post Graduation.....	5
Dropouts/Non-Graduates	6
Retentions	6
Attendance	6
Habitual Truants.....	7
Suspensions and Expulsions	7
Extra/Co-Curricular Activities.....	7
School-Sponsored Community Activities.....	7
Transportation.....	8
Food Service	8
District Staffing Ratios	8
DPI School Performance Comparison Information.....	9

Medford Area Public School District

The Medford Area Public School District is a composite of city and rural areas contained in approximately 350 square miles. Included within the school district boundaries are the City of Medford and the Village of Stetsonville, and all or parts of the Townships of Browning, Chelsea, Deer Creek, Goodrich, Grover, Hammel, Holway, Little Black, Maplehurst, Medford and Molitor in Taylor County, and the Town of Bern in Marathon County.

In 2014-15, the district employed approximately 165 certified staff, 94 support staff, and 10 administrators. The school district had a General Fund budget of \$21,794,429 in 2014-15.



District Enrollment

	Grade Level	2014-15 Third Friday in September Enrollment
Elementary Schools		
<u>M</u> edford <u>A</u> rea <u>E</u> lementary <u>S</u> chool (MAES) and <u>S</u> tetsonville <u>E</u> lementary <u>S</u> chool (SES)	PreK - 4	893
<u>R</u> ural <u>V</u> irtual <u>A</u> cademy	K - 9	173
Middle School		
<u>M</u> edford <u>A</u> rea <u>M</u> iddle <u>S</u> chool	5 - 8	581
High School		
<u>M</u> edford <u>A</u> rea <u>S</u> enior <u>H</u> igh (MASH)	9 - 12	654
Totals		2,301

Assessment Results

The Wisconsin Student Assessment System (WSAS) is a comprehensive statewide program designed to provide information about what students know in core academic areas and whether they can apply what they know. The WSAS includes:

- Badger Exam at grades 3-8 in English language Arts (ELA) and Mathematics
- Wisconsin Knowledge and Concepts Exam at grades 4, 8 and 10 in Science and Social Studies.
- Dynamic Learning Maps (DLM) at grades 3 – 11 in ELA and Mathematics
- ACT Aspire at grades 9 and 10 (*no scores are available*)
- The ACT Plus Writing at grade 11 for English, Reading & Writing (ELA), Mathematics and Science
- ACT WorkKeys at grade 11 (*no scores are available*)
- Advanced Placement (AP) (elective) - The percentage of students passing Advanced Placement exams with scores of 3, 4 or 5 is shown, along with the total number of students who have taken one or more AP exam in the high school.

Federal law requires all states to test all students in English Language Arts (ELA) and Mathematics in grades 3 – 8 and once in high school. Student performance on these assessments is reported in proficiency categories and used for accountability determination at the school, district and state levels. Wisconsin State statute also requires students to take Science and social Studies tests. These tests together create the Wisconsin Student Assessment System. (See the below 2014-15 results.)

Badger Exam (Gr. 3 – 8)	Medford	Wisconsin
ELA (Proficient)	52.7%	51.3%
Mathematics (Proficient)	51.4%	43.9%

WKCE	Medford			Wisconsin		
	Gr 4	Gr 8	Gr 10	Gr 4	Gr 8	Gr 10
Science (Advanced & Proficient)	90.3%	93.7%	83.8%	79.6%	79.2%	76.3%
Social Studies (Adv & Prof)	95.1%	89.9%	85.7%	91.0%	82.4%	80.5%

DLM (Gr. 3 – 11)	Medford	Wisconsin
ELA (Advanced & Proficient)	46.2%	43.8%
Mathematics (Adv. & Prof.)	23.1%	31.0%

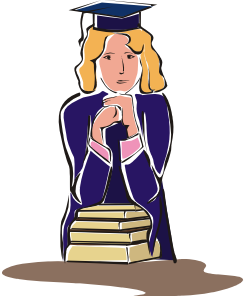
ACT Plus Writing (Gr. 11)	Medford	Wisconsin
ELA (Proficient)	36.3%	45.7%
Mathematics (Proficient)	37.0%	36.2%
Science (Proficient)	37.0%	31.7%

AP (Gr. 9 – 12)	Number of Students Taking Exams	Number of Exams Taken	Number of Exams Passed	Percent of Students Passing Exams
2010-11	91	142	76	53.5%
2011-12	72	113	75	66.4%
2012-13	81	123	66	53.7%
2013-14	149	225	138	61.3%
2014-15	119	164	103	65.8%

For more assessment results, please visit: <http://wisedash.dpi.wi.gov>.

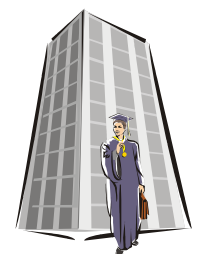
Graduates and Graduation Requirements

Beginning in 2009-10, the Wisconsin Department of Public Instruction (DPI) began reporting high school completion rates using the adjusted cohort rate formula. Adjusted cohort rates provide information about the number and percentage of students who earn a high school completion credential within an amount of time (four, five or six years). DPI reported legacy high school completion rates through 2011-12. Legacy rates provided information about the number of percentage of students who earned a high school completion credential by age 21 in any given year. The School District Performance Report only reports legacy rates.



	Medford			State		
	4 yr rate	5 yr rate	6 yr rate	4 yr rate	5 yr rate	6 yr rate
2010-11	92.1%	98.1%	N/A	87.0%	89.5%	N/A
2011-12	91.2%	93.7%	97.5%	87.5%	90.4%	90.4%
2012-13	90.7%	94.6%	94.2%	88.0%	90.8%	91.3%
2013-14	94.0%	93.1%	94.7%	88.6%	91.3%	91.5%
2014-15	89.5%	95.4%	92.5%	88.4%	91.6%	92.1%

Graduation Requirements (Class of 2015)		
	Medford	State
English	4.0	4.0
Mathematics	3.0	2.0
Science (1 physical / 1 biological).....	3.0	2.0
Social Studies/History.....	3.0	3.0
Health.....	0.5	0.5
Physical Education.....	1.5	1.5
Total Core Credits.....	15.0	13.0
Additional Credit Subjects:		
Computer Science	0.5	
Financial Literacy.....	0.5	
Fine Arts	0.5	
Life Management	0.25	
Vocational /Technical Education.....	0.5	
Electives	6.5	8.5
Total Credits Required	23.75	21.5



Post Graduation

These figures show the percentage of graduates enrolled in post-secondary educational programs or entering the workforce after graduation. Post-secondary educational programs include: one year technical or job training programs; two or more year vocational/technical programs; and college or university programs of two or more years. Students in the workforce include those planning to enter the military and those with a job they planned to start or continue upon graduation. Miscellaneous includes other, undecided, and no response.

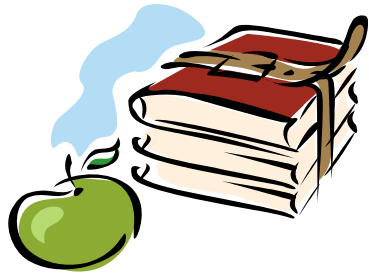
	2010-11	2011-12	2012-13	2013-14	2014-15
Continuing Education	69.1%	68.5%	73.1%	59.8%	69.2%
Military	2.8%	8.0%	3.9%	6.0%	8.6%
Employed/Seeking Employment/Misc.	28.1%	23.4%	23.0%	34.2%	22.2%
Totals	100.0%	99.9%	100.0%	100.0%	100.0%

Dropouts/Non-Graduates

The dropout rate is calculated by dividing the number of dropouts by the total third Friday in September high school enrollment. A dropout is a student who was enrolled in school at some time during the reported school year, was not enrolled at the beginning of the following school year, has not graduated from high school or completed a state or district-approved educational program, and does not meet any of the following exclusionary conditions: Transfer to another public school district, private school, or state or district-approved educational program; temporary absence due to expulsion, suspension or school-approved illness; or death.



	Medford Totals	
	Number	Rate
2010-11	1	0.15%
2011-12	3	0.31%
2012-13	3	0.32%
2013-14	6	0.60%
2014-15	8	0.81%



Retentions

The percentage of pupils retained shows the proportion of students “held back.” It is calculated by dividing the total number of students retained by the total number of students enrolled as of the third Friday in September, but did not include: Birth through age 2; Special Education Needs classes for ages 3 through 5; Title I; Preschool; Head Start; or 4-year old kindergarten.

2014-15	Pupils Retained	Retention Rate
District Totals	24	1.15%



Attendance

Attendance is the total number of full days children are in school. The district attendance rate comes from dividing total actual days of attendance by the total possible days of attendance.

2014-15	Enrollment (PK-12)	Possible Days	Actual Days	Attendance Rate
District Totals	2,296	412,781.0	400,607.5	97.1%



Habitual Truants

A habitual truant is a student who is absent from school without an acceptable excuse for 1) part or all of five or more days out of 10 consecutive days on which school is held during a semester or 2) part or all of 10 or more days on which school is held during a semester. The number of pupils habitually truant is an annual non-duplicated student count. A student is reported as a habitual truant by the school the student was attending when he/she became a habitual truant. The habitual truant rate is the number of pupils habitually truant divided by the third Friday in September enrollment. Birth through Age 2; Special Education Needs classes for ages 3 through 5; Title I, Preschool; Head Start; or 4-year old kindergarten are excluded from this report.

2014-15	3rd Friday Enrollment	Number of Pupils Habitually Truant	Habitual Truant Rate
District Totals (K - 12)	2,142	42	2.0%



Suspensions and Expulsions

The table below shows the number of students who either served an out-of-school suspension or expulsion order.

2014-15	Out-of-School Suspension	Expulsions
District Totals	42	6



Extra/Co-Curricular Activities

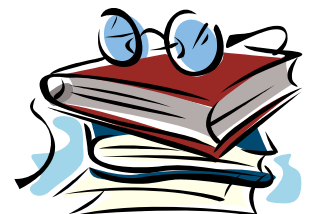
The number of participants in the non-duplicated sum of students taking part in each extra/co-curricular activity area (academic, athletic, or music). Participation is not required, and the group or event is not offered for credit or grade. The participation rate for each activity is the number of participants divided by the 6th through 12th grade third Friday in September enrollment.

2014-15	District Totals
3rd Friday Enrollment (6 - 12)	1,138
Percent of Academic Participation Average	48.4%
Percent of Athletic Participation Average	56.3%
Percent of Music Participation Average	17.2%

School-Sponsored Community Activities

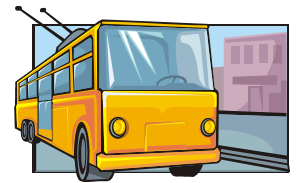
The school participation rate for school-sponsored community activities comes from dividing the number of students by the third Friday in September enrollment. This rate pertains only to high school students. These activities emphasize service and community involvement.

2014-15	Medford	
3rd Friday Enrollment	663	
Average Required	4	69.8%
Average Voluntary	70	42.4%



Transportation

In 2014-15 the Medford Area Public School District contracted with Krug Bus Service to transport approximately 2,500 pupils attending both public and parochial schools on a daily basis. Our district is relatively large, so the approximately 350 square mile area is serviced by 22 regular a.m. bus routes and 22 p.m. bus routes. Bus routes are evaluated each year in an attempt to keep passenger time as short as possible.



The Medford Area Public School District has a transportation handbook to assist parents and students with questions and procedures about transportation. Krug Bus Service provides a safe and efficient service to residents of the school district.

Food Service

Mission: The mission of the food service program is to provide our children nutritionally balanced, low cost meals (breakfast and lunch) which meet the federal and state guidelines of the National School Lunch Program. The Program encourages student participation by providing variety, quality and quantity in meals served. Those individuals qualifying for free lunch will also qualify for free breakfast.



	Number of Student Meals Served	Percent of Participation
2011-12 Meals	302,951	78.0%
2012-13 Meals	265,830	71.7%
2013-14 Meals	263,396	68.5%
2014-15 Meals	266,092	70.3%

2014-15								
Grade Level	Breakfast Program				Hot Lunch Program			
	Day	Week	Day	Week	Day	Week	Day	Week
Grades K-4	\$1.30	\$6.50	\$0.30	\$1.50	\$2.20	\$11.00	\$0.40	\$2.00
Grades 5-8	\$1.40	\$7.00	\$0.30	\$1.50	\$2.35	\$11.75	\$0.40	\$2.00
Grades 9-12	\$1.50	\$7.50	\$0.30	\$1.50	\$2.50	\$12.50	\$0.40	\$2.00

District Staffing Ratios

District Pupil / Staff Ratio			
	# of Staff	Medford	State
Administration	Information not available from DPI at the time of publication.		
Assistants/Support Other			
Licensed Instruction			
Overall Totals			



Wisconsin Teacher License Status – Core Subjects Summary							
	Total	Full License		Emergency License		No License for Assignment	
	# of FTE Teachers	# FTE	% of Total	# FTE	% of Total	# FTE	% of Total
2010-11	142.7	138.7	97.2%	4.0	2.8%	0.0	0.0%
2011-12	142.3	141.3	99.3%	1.0	0.7%	0.0	0.0%
2012-13	143.3	140.3	97.9%	2.0	1.4%	1.0	0.7%
2013-14	143.2	141.8	99.0%	1.5	1.0%	0.0	0.0%
2014-15	Information not available from DPI at the time of publication.						

Medford is part of the Great Northern Conference. School Districts in the Great Northern Conference include: Antigo, Lakeland Union High School, Medford, Mosinee, Northland Pines, Rhinelander and Tomahawk. To see the data for Medford and/or compare it to the data of Great Northern Conference schools, please go to <https://apps2.dpi.wi.gov/sdpr/spr.action> and select Medford (see below).



Wisconsin District and School Performance Reports Node: WASPWW01

Each year, DPI provides public performance reports for all public schools and districts in Wisconsin. The reports each address sections of state or federal reporting requirements. All reports-and the many and varied indicators contained within-should be considered when reviewing a school or district's annual progress. While some of the same data appears in multiple reports, each serves a distinct purpose under state and federal education laws. For additional information on a school or district, see the [WISEdash Public Portal](#).

School Report Cards

Beginning in 2011-12, as part of the new state accountability system, the Department of Public Instruction (DPI) has produced report cards for every school in Wisconsin. These School Report Cards provide data on multiple indicators for four Priority Areas:

- **Student Achievement** – performance on the WKCE and WAA-SwD in reading and mathematics
- **Student Growth** – improvement over time on the WKCE in reading and mathematics
- **Closing Gaps** – progress of student subgroups in closing statewide gaps in reading and mathematics performance and/or graduation rates
- **On-track and Postsecondary Readiness** – performance on key indicators of readiness for graduation and postsecondary pursuits, whether college or career

Wisconsin School District Performance Report (SDPR)

The SPR serves as a district's annual public report required under [s.115.38 WI Statutes](#) passed in 1991. The report covers a list of topics with comparisons to other districts in the same athletic conference:

- Achievement Test Results (grades 3, 4, 8 and 10)
- ACT, AP® Exam, Retention
- Attendance, Dropouts, Truancy
- High School Completion, Post-graduation Plans
- Program Offerings and Participation
- Staffing, Finance
- Suspensions and Expulsions

School Year:	<input type="text" value="2014-15"/>	<input type="button" value="Go"/>
District:	<input type="text" value="Medford Area Public"/>	<input type="button" value="Go"/>

[Linking directly to your district's report](#)

ESEA Reporting

Federal reporting under the Elementary and Secondary Education Act (ESEA) includes requirements to report statewide test results for districts and schools, attendance, teacher qualifications data, graduation rates, and more. To find a specific type of statewide, district, or school data, click on a link below.

- [Attendance](#)
- [Graduation](#)
- [NAEP Results](#)
- [State Test Results](#)
- [Teacher Qualifications](#)

ESEA Data Map for ISES, CWCS, WSLs

Using WISEdash to meet other report card requirements not covered by the School Report Cards - District and school statewide test results, attendance, teacher quality data, graduation rates and much more can be found on the Wisconsin Department of Public Instruction [WISEdash Public Portal](#). For more information visit the [WISEdash Public Portal Homepage](#) and the [WISEdash Public Portal District Communication Page](#).

Special Education District Profile Reports

Federal reporting under the Individuals with Disabilities Education Act (IDEA) includes requirements to annually report district performance on education targets for indicators listed in the State Performance Plan. Indicators include graduation, dropouts, assessments, and more. DPI reports district data through the Special Education District Profile (<http://dpi.wi.gov/sped/educators/local-performance-plans/profile>). Questions regarding the district profile should be directed to the Special Education Team at dpisped@dpi.wi.gov or (608) 266-1781.

Parental Choice Program Results

This link contains summary reports of performance on the WKCE and WAA-SwD for Milwaukee Parental Choice Program (MPCP) and Racine Parental Private School Choice Program (PPSCP) students. Data includes number enrolled, percent not assessed, and percentages of enrolled at minimal performance, basic, proficient, and advanced categories. Results can be accessed here: <http://dpi.wi.gov/assessment/parental-choice-program/data>.